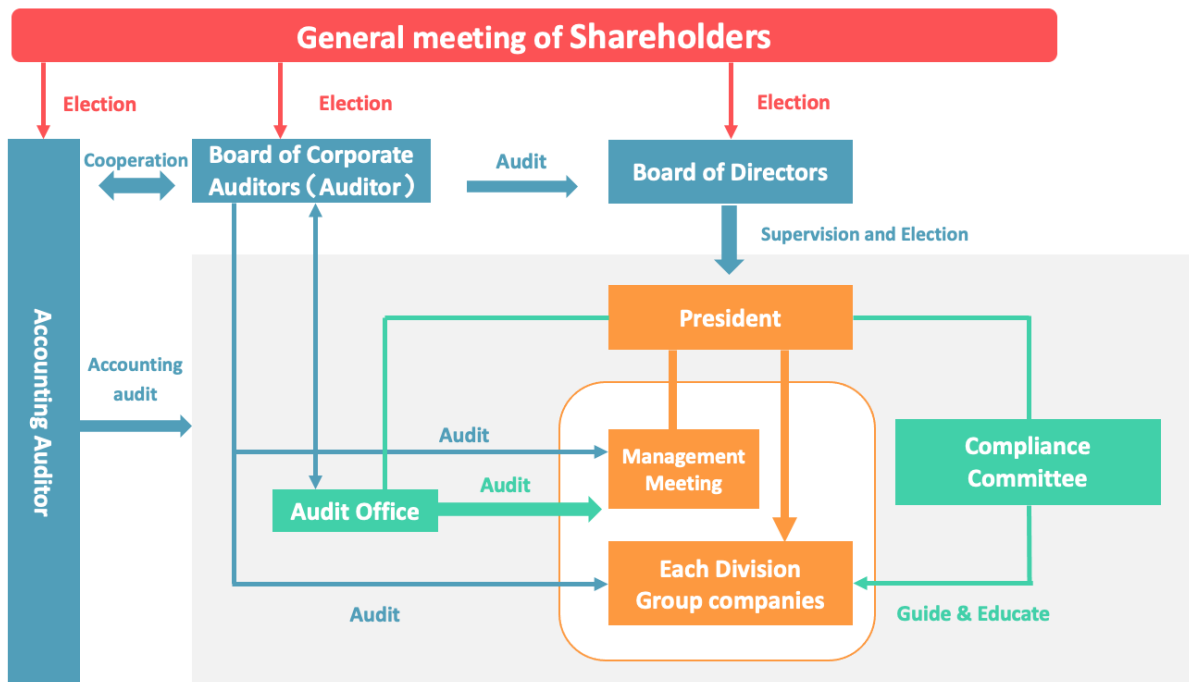


Corporate Governance

Corporate Social Responsibility

Based on a high level of corporate ethics in accordance with our management philosophy, we recognize the importance of ensuring legality and validity in decision-making and execution, and it is our basic policy to ensure the sustainable development of our business.



Under this policy, we make management decisions swiftly and flexibly, expand our business and strengthen our corporate competitiveness, improve the corporate value of our entire group over the long term based on our sustainability policy*1, and demonstrate our commitment to meeting the expectations of our stakeholders.

Today, companies must not only comply with laws and regulations, but also fulfill their corporate social responsibility by acting in an ethical and socially responsible manner. As a part of this social trend, Onamba's mission is to develop and provide products, technologies, and services that are both safe and kind to the environment, to strive to build a better global environment, and to contribute to the development of a better society. We also hope that, by engaging in corporate activities with integrity and sincerity, we will earn the trust of society.

*1 Sustainability policy

Our aim is to improve sustainable corporate value by implementing our management philosophy.

1. Creating solutions to social issues through our business based on our medium-to-long-term vision
2. Achieving fair and transparent management with the aim of becoming a truly global corporation
3. Building strong relationships of trust based on dialogue with all of our stakeholders